

Waterford Historical Society Newsbill

Volume 21, Number 4

December 2016 - January/February 2017

Editor Becky Morgan 248-673-2689
rmorgan56301@comcast.net

Calendar

Saturday, December 3

Christmas Sale

10:00 -4:00

(see article inside newsletter)

December 7

Board Meeting 1:00

In the Hatchery House

December 8 at Noon

Holiday

Pot Luck Luncheon

(see article inside newsletter)

**Historical Society
Closed to the Public
Starting Dec. 8, 2016**

January 2017

WHS Closed to Public

February 2017

WHS Closed to Public

**WHS Reopens the first
Wednesday in March
Weather Permitting**

**If Waterford Schools
are closed
we are closed**

President's Notes

The beauty of fall and the crisp coming of winter is at Fish Hatchery Park. Although Christmas in October is done, you may continue to shop in the Log Cabin and Jacober's General Store. Shop on Wednesdays during our regular hours (from 10:30-2:00 on 11/2, 11/9, 11/16, 11/30) and then for the Christmas Sale on Saturday, December 3, from 10-4.

Keep in mind our schedule for the coming year: The Hatchery House and Log Cabin will be closed after December 8, 2016, and open again on March 1, 2017. The Village will open for the season on May 3, 2017. And IMPORTANT, even for March, when the Waterford School District is closed, we are closed.

"Christmas is not a time nor a season, but a state of mind. To cherish peace and goodwill, to be plenteous in mercy, is to have the real spirit of Christmas."— President Calvin Coolidge

So, let us all be plenteous in mercy this season.

A peaceful Holiday to you,

Sally Strait



Village Schedule



The Waterford Historical Society closes to the public from December 8, 2016 through February 2017. The Hatchery House, Library & Office reopen the first Wednesday in March 2017, weather permitting.

The Village re-opens the first Wednesday in May.

Board Members

President

Sally Strait 248-683-2697
sstrait649@comcast.net

Vice President

Bob Allen 248-623-0463

Recording Secretary

Becky Morgan 248-673-2689

Corresponding Secretary

Betty Seymour 248-666-4265

Treasurer

Betty Horn 248-673-9708

Bookkeeper

Cheryl Stoutenburg 248-623-0414

Members At Large

Grace Rockey 248-666-3673

Gary Wall 248-674-6201

Norman Watchpocket 248-673-5310

Tammie Wolfe 248-842-1664

Dorothy Webber 248-666-4907

Liaison

Walt Gale - Liaison between
Waterford Historical Society Board
& Waterford Parks & Recreation Board

Reminder...

Annual Memberships expire December 15, 2016. Renew now to keep your membership and newsletter subscription current. See page 5 for details.





Christmas Sale

Our Christmas Sale will take place on Saturday, December 3rd from 10 am - 4 pm. The sale will take place in Jacober's General Store and the Log Cabin.

This is the last chance to shop for Christmas Items.

(All proceeds go to the Waterford Historical Society.)

Shoppers will find:

- | | |
|---------------------------|----------------------------|
| -aprons | -jams, honey, salsa, soups |
| -candles, soaps | -jewelry |
| -children's items | -local handmade items |
| -gift baskets | -Michigan items |
| -gift mugs | -pet items |
| -handmade greeting cards | -sachets |
| -handmade Michigan mugs | -stocking stuffers |
| -historic children's toys | -unique holiday items |
| -holiday decorations | -Waterford shirts |
| -homemade cookies | -WHS afghan |

Be sure to tell friends and neighbors about the sale! It is a great place to finish up holiday shopping and find those last minute unique items for those hard to shop for persons.

Cookies WANTED

- ◆ We need cookies baked for our popular Cookie Sale during our Christmas Sale. These cookies are big sellers.
 - ◆ Bake and put four cookies in a baggie. Bring them to the Log Cabin on Saturday, Dec. 3rd.
- Customers love the cookies.
Thank you to everyone who bakes!



Save the Date!

Celebrate Spring
at the Fashion Show Fundraiser
for the Waterford Historical Society
Saturday, March 25, 2017

Tickets are \$30.00 per person
(Lunch is included in the price)

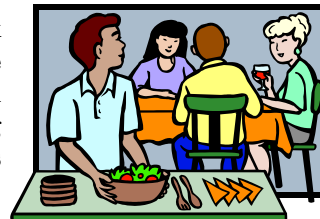
Fashions by
The Clothing Cove

For info call
Betty Seymour
at 248-666-4265



Join us for the Holiday Pot Luck Luncheon Thursday, December 8th at noon Christ Lutheran Church 5987 Williams Lake Road

The Holiday Pot Luck Luncheon is one of the Waterford Historical Society's ways of saying thank you to all our members for everything they do.



Please join us if you can. This is one of the times we can all get together and enjoy each other's company.

- ◆ **The Waterford Historical Society provides the meat, beverages and place settings.**
- ◆ **Waterford Historical Society members are welcome to bring a guest.**
- ◆ **Everyone is asked to bring a dish to pass.**

People attending the luncheon in the past have loved the variety of dishes provided by our members and look forward to the special dishes that are shared.

Hoping to seeing a big crowd at our holiday gathering!

Help Waterford Goodfellows

The Waterford Historical Society will once again be donating items to the Waterford Goodfellows Holiday Food Basket Program. Holiday baskets contain the fixings for a holiday dinner, canned goods, candy and a toy for each child ages birth through 12 years old.



The Historical Society will be collecting:

-canned goods	-mittens
-coloring books	-crayons
-new children's books	
-non-perishable food items	
-games & toys for all age groups.	

In times of emergencies the Goodfellows also provide other assistance to Waterford residents, so monetary donations are also welcome.

Items may be dropped off at the Hatchery House on Wednesdays before December 7th or at Christ Lutheran Church December 8th at the holiday luncheon.

Remembering J.L. Hudson's

In 1924 Detroit's J.L. Hudson Store staged Detroit's first Thanksgiving Parade which continues today. The event, which marked the arrival of Santa Claus, would become one of Detroiters' favorite local traditions. In 1964, Hudson's created a splendid holiday presentation of lights and decorations including a 125 foot tall Christmas tree on Woodward. Children all over the Detroit area visited Hudson's 12th floor where the 'real' Santa awaited them. 250,000 kids visited each year. On weekends the line to Santa would snake for several floors at a time. Many people in the Detroit area fondly remember the mythical children's toy floor.

Joseph Lowthian Hudson, 35 years old, founded the J.L. Hudson company in 1881. At that time it was a clothing store for men and boys. It was first located on Campus Martius in the old Detroit Opera House Building.

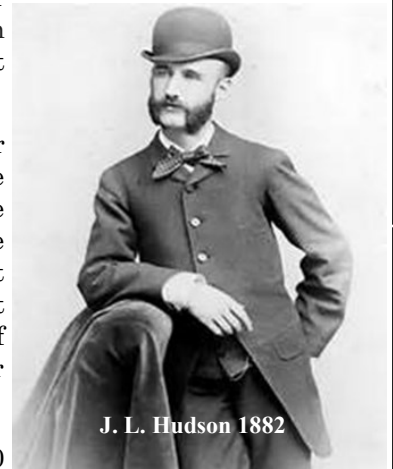
In 1911 Hudson opened a larger location on Woodward Avenue thinking the area would become the center of downtown Detroit. The store was housed in a structure that was the world's tallest department store until 1961 - 25 floors, two half floors, a mezzanine and four basements.

The store had 39 men's restrooms, 50 women restrooms and 10 private restrooms for the executives. The largest restroom was a women's lounge on the fourth floor that had 85 stalls. The store also had 705 fitting rooms. The building had 51 passenger elevators, 17 freight elevators, eight employee elevators and 48 escalators. Its largest freight elevator could accommodate a semi trailer.

The dining rooms and cafeterias served an average of 16,000 meals a day - including the 6,000 meals served in the employee cafeteria on the 14th floor. The 13th dining room was renowned for its Maurice salad and Canadian cheese soup.

The Hudson family also founded the Hudson Motor Company. It eventually became a part of American Motors Corporations and later Chrysler. At its most successful sales year in 1929, the company was ranked behind only Ford and Chevrolet.

Hudson operated the store until his death in 1912 when his four nephews, James, Joseph, Oscar and Richard Webber assumed control. When the nephews took over the business it continued to thrive becoming one of the largest department stores in the United States at the time. The third generation of the family assumed control in 1961 when Joseph L. Hudson, Jr. became the president of the company.



J. L. Hudson 1882

Hudson's department store as shown on A 1950s postcard.



THE J. L. HUDSON COMPANY, DETROIT, MICHIGAN

Hudson's will always be remembered for owning the world's largest flag, which was draped across the building's Woodward façade on Armistice day and other patriotic holidays. The flag was first hung on Armistice day in 1923 and was later shown off at the world's fair in 1939. At 3,700 square feet, the stars were a half-foot tall, and one mile of rope was needed to hang it. The original flag was last displayed in 1949, to be replaced a year later with a new seven story flag that required 55 men to hang it. After being hung for the final time in 1976, the flag was donated to the Smithsonian Institution.



The seven-story American flag was hoisted every Flag Day from 1959-1976 on the Hudson's department store in downtown Detroit.



A sign on Hudson's in Detroit hangs in support of the Detroit Tigers during the 1968 World Series.

The first Festival Fireworks were started by Hudson's in 1959 as a July 4th celebration between Detroit and Windsor and they sponsored the fireworks up through 2000. The fireworks remain an international celebration today.

Hudson's downtown Detroit Department Store still holds a special place in the hearts of many Michiganders.

(Sources: Detroit Free Press, huffingtonpost, wikipedia, Washtenaw County Historical Society, Detroit Historical Society)

DELICIOUS RECIPES
including
Toll House
CHOCOLATE COOKIES

NESTLÉ'S
SEMI-SWEET CHOCOLATE
(Yellow Label)

The Story of the Famous Toll House Cookies

In New England, on the outskirts of Whitman, Massachusetts, stands a lovely old Cape Cod house. Back in the early 1700's it was used as a toll house where passengers changed their horses, dined, and paid their toll charges.

THE TOLL HOUSE AT WHITMAN, MASS.

It was here in 1930 that Ruth Wakefield, a well-known dietician and lecturer, started her now famous inn, calling it "The Toll House," where old-fashioned favorites and new recipes are carefully prepared and served in a modern atmosphere.

Among these delicious recipes which Mrs. Wakefield has created is the new and different kind of chocolate cookie. This recipe listed on the opposite page, is taken from Mrs. Wakefield's own cook book. All other recipes contained in this booklet have been derived from other sources.

There is a taste surprise in these tender, golden brown Toll House cookies. A creamy bit of Nestlé's Semi-Sweet Chocolate and the flavor of walnut make a particularly happy combination. Only with Nestlé's Semi-Sweet Chocolate can you achieve this perfect blend of flavor.

Copyright 1939, by Lamont, Corliss & Co., New York

Toll House CHOCOLATE COOKIES*

Cream
1 cup butter, add
¾ cup brown sugar
¾ cup granulated sugar and
2 eggs beaten whole. Dissolve
1 tsp. soda in
1 tsp. hot water, and mix alternately with
2¼ cups flour sifted with
1 tsp. salt. Lastly add
1 cup chopped nuts and
2 Economy size bars (7 oz. ea.)
Nestlé's Semi-Sweet Chocolate which have been cut in pieces the size of a pea.

Flavor with
1 tsp. vanilla and drop by half teaspoons on a greased cookie sheet. Bake 10 to 12 minutes in 375° F. oven.
Makes 100 cookies.

*This and other delicious recipes may be found in Mrs. Ruth Wakefield's cook book "Toll House Tried and True Recipes." On sale at all bookstores.

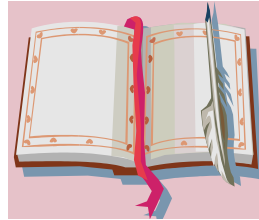
DIRECTIONS FOR USE
Here's a hint! Before starting your Toll House Chocolate Cookies, unwrap your bar of Nestlé's Semi-Sweet and put it in a spot slightly warmer than room temperature (about 80° F.), but do not melt. You'll be surprised to see how easy it is to cut the bar with your paring knife.

Page 1

Who Visited Us This Year?

The 2016 visitors came from the following places as recorded on the guest register in the Hatchery House:

Bay Village OH	Lake Orion	White Lake
Berwick ME	Las Vegas NV	Wixom
Clarkston	Manistique	Ypsilanti
Commerce Twp.	Milford	Waterford
Davisburg	Orion Twp.	
Drayton Plains	Ortonville	
Edenville	Pontiac	
Fenton	Portage	
Grand Rapids	Richland WA	
Goodrich	Saginaw	
Holly	Saline	
Country of Ireland	Sarasota FL	
Kawkawlin	West Bloomfield	



(All are Michigan cities unless stated otherwise.)



“All day the storm lasted. The windows were white and the wind never stopped howling and screaming. It was pleasant in the warm house. Laura and Mary did their lessons, then Pa played the fiddle while Ma rocked and knitted, and bean soup simmered on the stove. All night the storm lasted, and all the next day. Fire-light danced out of the stove’s draught, and Pa told stories and played the fiddle.” **Laura Ingalls Wilder, On the Banks of Plum Creek**



Help Us By Shopping



We really appreciate everyone who participates in the Kroger community savings program by making sure you have registered our number (82795) on your Kroger card and by using your store card every time you shop at Kroger. They donate a percentage of your purchases to the Waterford Historical Society.

Thank you to Kroger for their generosity!

Can you help?



Annual Giving

We are including our Annual Giving form with this newsletter instead of sending out an additional mailing.

Our annual giving is a yearly plea for help with the day to day expenses like electricity, gas and insurance.

All our funding comes solely from donations by generous people interested in preserving the history of Waterford.

It might be a member who cannot volunteer on Wednesdays or at our special events. Or maybe a lifetime member who may be able to give a little more. This is a chance to help out. Donations are just as important as volunteering.

We thank everyone for helping us continue to be an organization of which we all can be proud.

Renew Your Membership... or Become a Member

of the Waterford Historical Society

Anyone who is interested in becoming a member of the Waterford Historical Society may clip and fill out the form below. Bring it in on a Wednesday or mail it to:

Waterford Historical Society
P.O. Box 300491
Waterford MI 48330-0491

All memberships coming in now will be good until December of 2017. This entitles members to receive the WHS newsletters.

There is much going on. Don't miss out!



Join us...

Help keep history alive.

Waterford Township Historical Society Membership Application - New Address? Check Here:

- \$15.00 Individual
- \$25.00 Family
- \$100.00 Patron
- \$50.00 Organizations/Businesses
- \$150.00 Lifetime per family
- \$100.00 Lifetime per person
- \$125.00 Lifetime per couple
- \$250.00 Lifetime Org./Businesses
- \$500.00 Lifetime Patron

Date	Phone
Name	
Address	
City, State, Zip	Mail payment to:
Make Check Payable To:	Waterford Historical Society
Waterford Township Historical Society	P.O. Box 300491
	Waterford, MI 48330-0491

Waterford Historical Society

We are open every Wednesday from 10:30 a.m. until 2:00 p.m. **We close for the season after Dec. 8 and re-open the first Wednesday in March.**

We are located in Fish Hatchery Park at:
4490 Hatchery Rd
Waterford, MI 48329

Our Mailing Address is:
P.O. Box 300491
Waterford, MI 48330-0491

Contact us at:
Sally Strait 248-683-2697

www.waterfordhistoricalsociety.org
Non-profit 501(c)3 organization

Thanks Newsletter Sponsors!



This newsletter is brought to you by Nick & Becky, Tom Newcombe, Cristy Kay, and the Wolfe Family: Tom, Tammie, Sam & Melissa. Thank you !!!

Like to sponsor a newsletter? Send a check for \$25 to WHS at : PO Box 300491, Waterford MI 48330-0491. Write 'Newsletter' on the memo line.

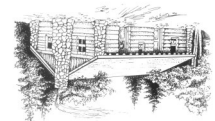
Upcoming Local Events:

- ◆ **Christmas Sale:** Saturday, Dec 3rd
from 10 am-4 pm at Fish Hatchery Park
(Waterford Historical Society Fundraiser)
www.waterfordhistoricalsociety.org
- ◆ **Santa at the Farm/Christmas Open House:**
Sunday, Dec 4th from noon-4pm
Takes place at Fisk Farm in White Lake
248-887-3244 www.hsmichigan.org/whitelake/events/
- ◆ **WHS Holiday Pot Luck Luncheon:**
Thursday, Dec 8th at noon
Christ Lutheran Church (see article in newsletter)
- ◆ **Kettering Holiday Collage Concert :**
December 8th-10th, 7 pm, Kettering Performing Arts Center
www.waterfordpac.com (248-673-4205) for tickets
- ◆ **New Horizons Concert Band Performance:**
Sunday, December 11th, 3 pm, Kettering Performing Arts Center
www.waterfordpac.com (248-673-4205)
- ◆ **Mott Holiday Showcase Concert:**
December 14th-15th, 7 pm, Mott Performing Arts Center
www.waterfordpac.com (248-673-4205) for tickets

Our Mission Statement:
Collecting, protecting and preserving the history of
Waterford Township for the interest and education
of present and future generations.

Waterford Township Historical Society

P.O. Box 300491
Waterford, Michigan
48330-0491





Waterford Historical Society

Annual Giving 2016

The Annual Giving is the way in which members and friends of the Waterford Township Historical Society go the extra mile for HISTORY. Your generous donation enables us to continue our preservation, growth, and research of history for Waterford Township residents.

Name _____

Address _____

City, State, Zip _____

Please make checks payable to and mail to:

Waterford Historical Society

P.O. Box 300491

Waterford, MI 48330-0491

_____ \$250

_____ \$100

_____ \$50

_____ \$25

_____ other